

# Milesight LPR Cam + ISS integration guide

Version 2.03

## Table of Contents

<b>1</b>	<b>Description.....</b>	<b>3</b>
<b>2</b>	<b>Installation.....</b>	<b>4</b>
2.1	Milesight Camera configuration.....	4
2.2	Install ISS.....	6
2.3	ISS AddOn Package Installation.....	6
<b>3</b>	<b>Additional settings for integration.....</b>	<b>7</b>
3.1	ANPR settings in ISS side.....	7
3.2	Change Service port 80 to 81.....	9
3.2.1	ANPR Event Popup :.....	11
<b>4</b>	<b>Optional Setting :.....</b>	<b>11</b>
4.1	Manually Importing License Plate List to the ISS.....	11
<b>5</b>	<b>Demonstration :.....</b>	<b>12</b>
<b>6</b>	<b>Contact Point :.....</b>	<b>12</b>
<b>7</b>	<b>Trouble shooting.....</b>	<b>12</b>

## 1 Description

This document describes the integration methods and settings of Milesight LPR Camera and ISS.

Let's see the files for the installation.

Supported device and firmware :

ISS : v5.0.0 official version

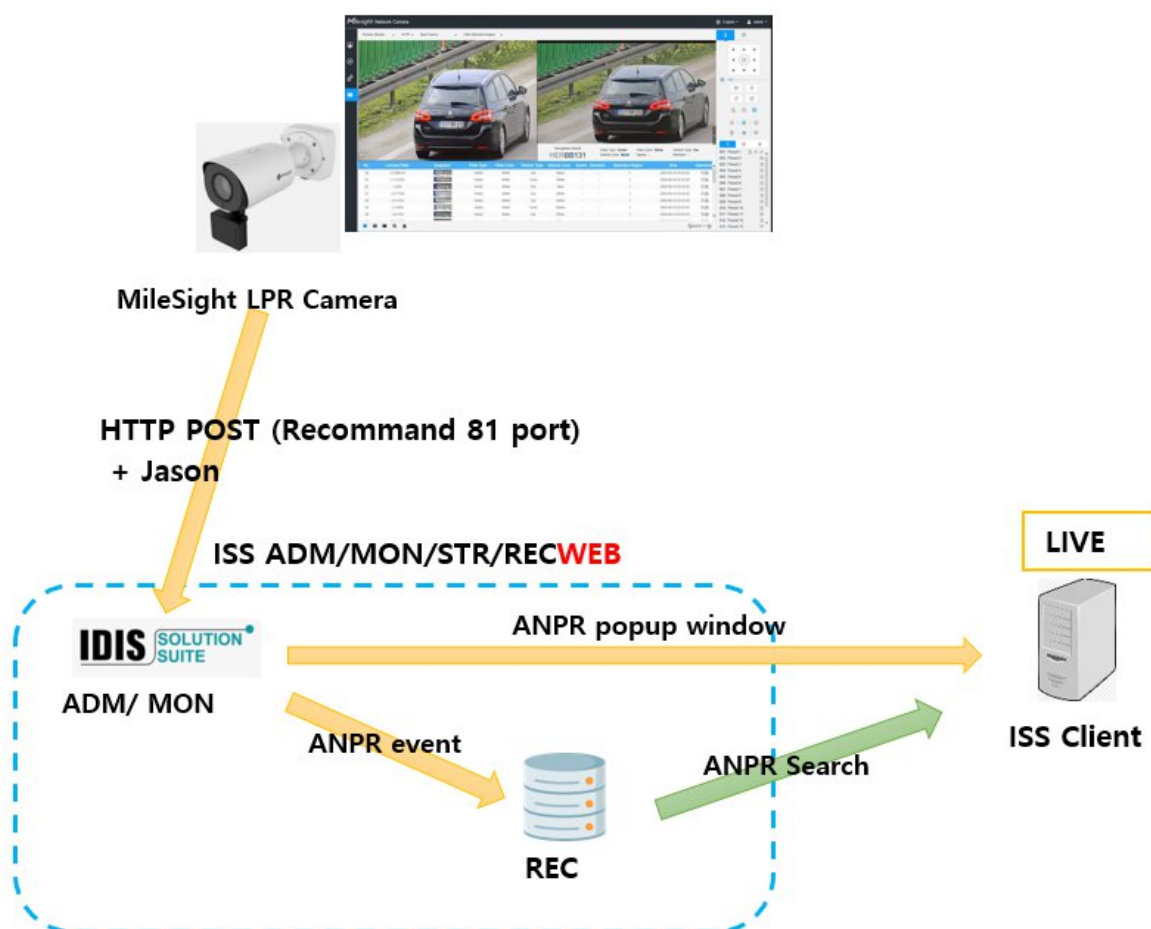
ISS AddOn Package for Milesight : [AddON\\_20250513\\_IDIS\\_VAI\\_ANPR](#)

Milesight TS-2866-X4TWC : 45.8.0.3-LPR\_AM-r3

(The testing was done using that specific camera, but of course, the integration can work with other cameras as well)

Now that we've got the supplies, let's take a technical look at how they work

### MileSight Integration diagram



1. Milesight camera registers with ISS as Onvif and, when the vehicle is recognized, forwards the data to ISS Mon service.

+ It is delivered in HTTP with JSON format, and the service port is changed individually from 14001.

2. ISS Mon parses JSON format and stores it in ISS REC service, respectively, and transmit the information to the ISS ANPR Popup Window.

A. Transmit vehicle information and still shot to ISS ANPR Popup Window

+ Upon receiving an event from Milesight, the ISS Mon service immediately requests a still shot to the Milesight camera and update it to the ANPR pop-up window.

B. Record in ISS REC service

+ The license plate and ANPR Deny/Allow list information are stored.

+ Related event search is possible through ISS Client.

3-1. ISS Client Live tab :

+ Once the license plate is recognized, the ANPR Popup window is activated. (optional)

+ The event window in the lower right also updates the relevant event.

3-2. ANPR Search at the Event search in ISS Client :

+ Go to Playback tab > Event Search > ANPR, you can search the license plate number and Allow / Deny events.

the technical data flow is explained. now let's install it. The procedure is as follows.

Step to install :

Set Milesight camera ANPR Event trigger (HTTP POST)

Install ISS package : ADM/MON/STR/REC service

Install ISS AddOn Package

Additional settings for ANPR integration

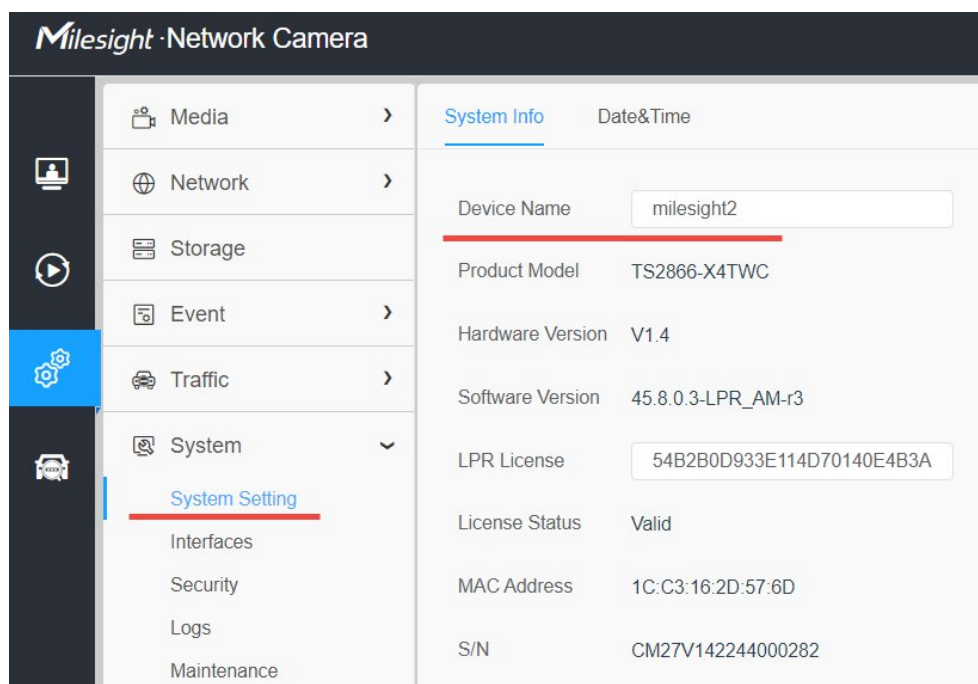
## 2 Installation

### 2.1 Milesight Camera configuration

1. Enter the device name of the Milesight camera.

+ **(Important)** Enter a unique name because this setting must match the Human-Friendly ID setting of the ISS in further.

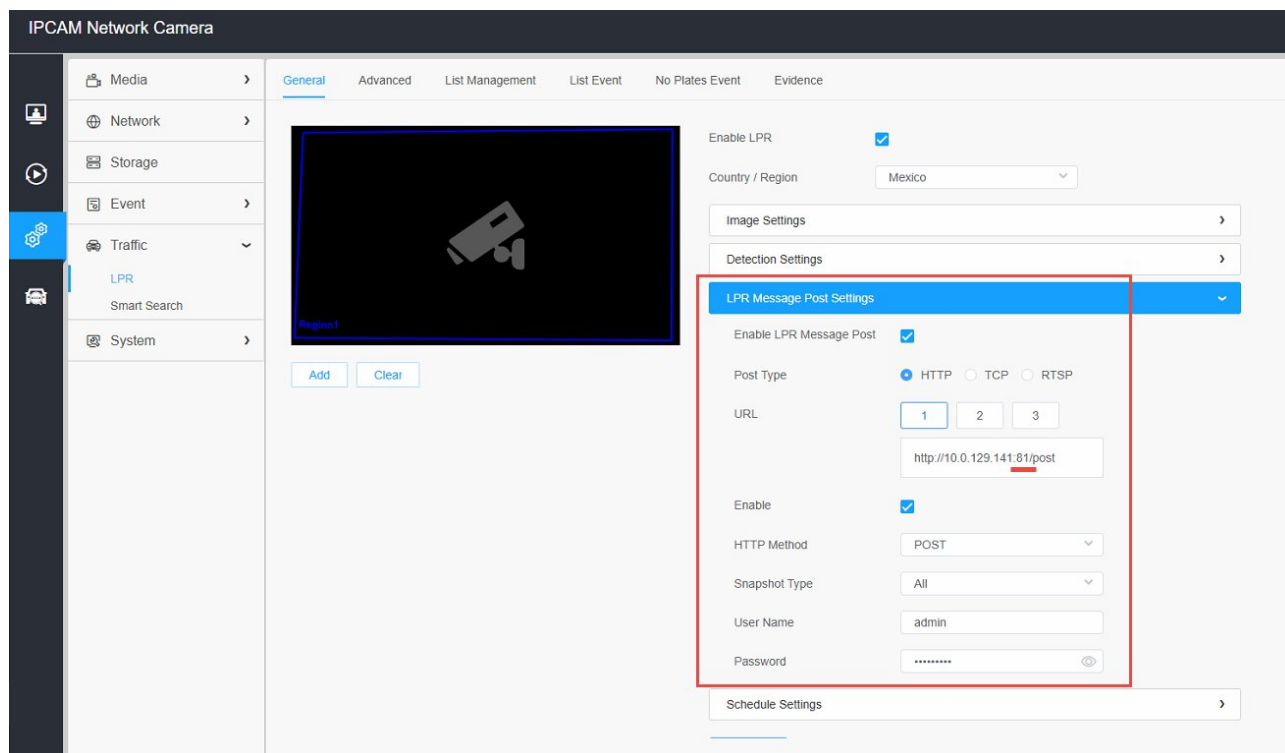
+ This is to distinguish the ANPR cameras in ISS side.



2. Set up the settings for sending data from the Milesight camera to the ISS as follows.

(i.e : `http://10.0.129.213/post`)

+ because IDIS VAI and Milesight both uses same service port, the port for milesight should be changed to 81.



## 2.2 Install ISS

Installation order :

**ISS install : ADM/MON/STR/REC service**

ISS AddOn Package install

Additional settings for integration

Install **ADM/MON/REC/STR service** when installing ISS.

## 2.3 ISS AddOn Package Installation

After installing ISS, proceed to install the AddOn Package.

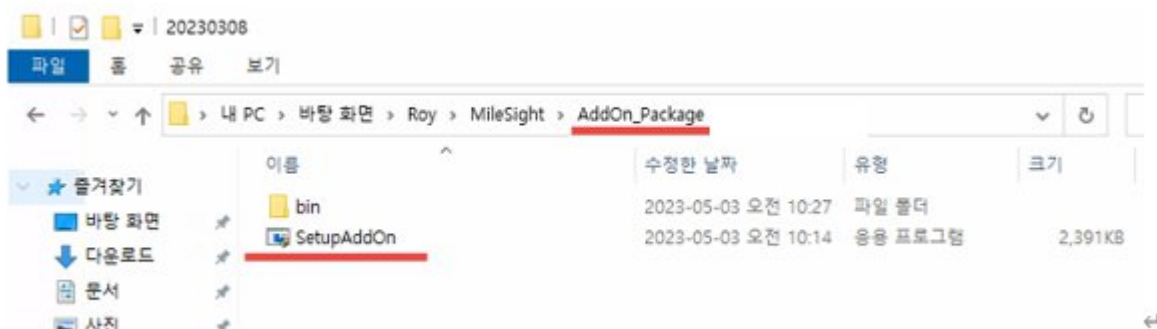
Step :

- Stop all ISS Services

- Run SetupAddOn.exe file

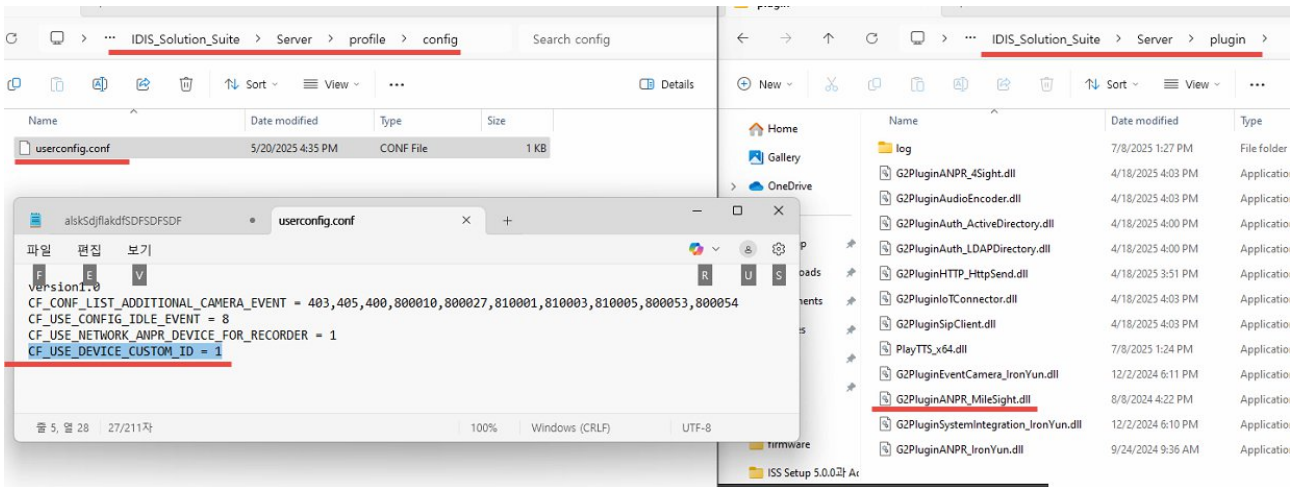
+ Note: There won't be any popup window after completing the installation of the AddOn Package.

+ Therefore, after installing it, ISS services have to be restarted manually.



Note :

After install AddOn package, below configuration and files are updated.



(Note) After installing the ISS Addon package, the configuration has been updated as shown above. You can view it in the WordPad app.

### 3 Additional settings for integration

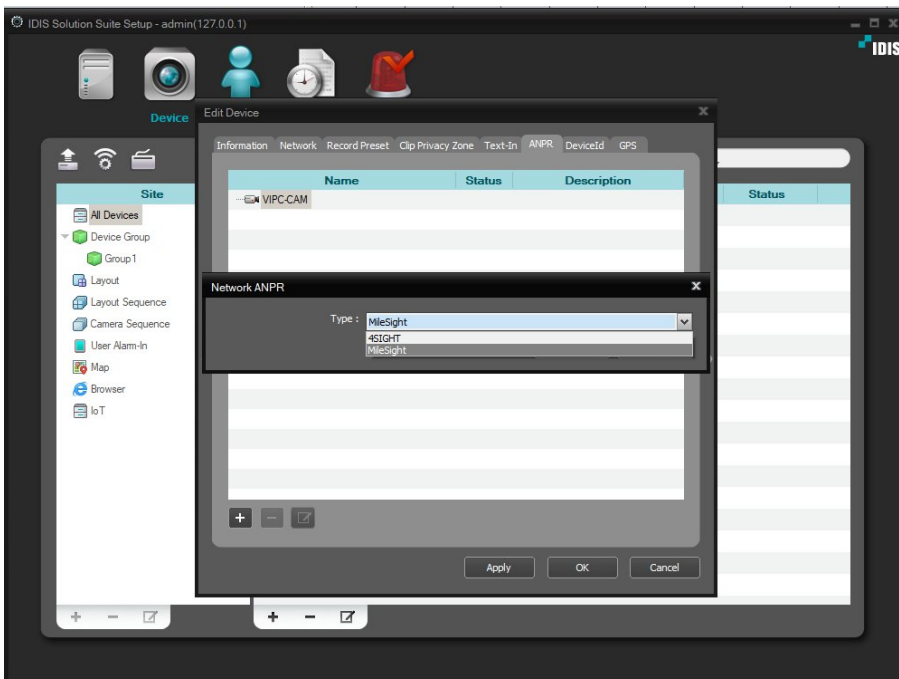
#### 3.1 ANPR settings in ISS side

First, register Milesight Camera with ISS,

After register it,

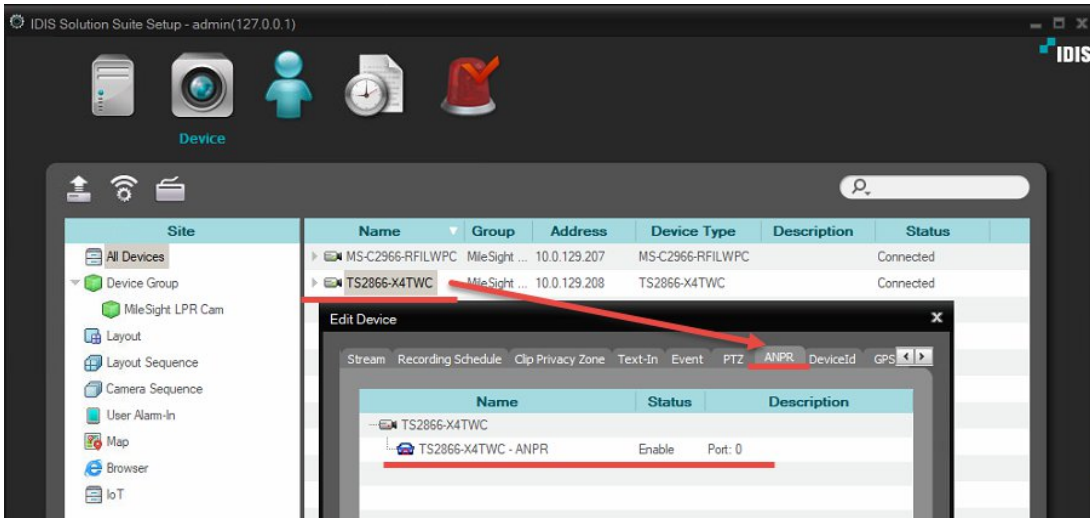
1. ISS Setup > Device tab > Edit Milesight Camera > ANPR tab> click (+) button to add Milesight type.

After selecting MileSight, press the OK button.



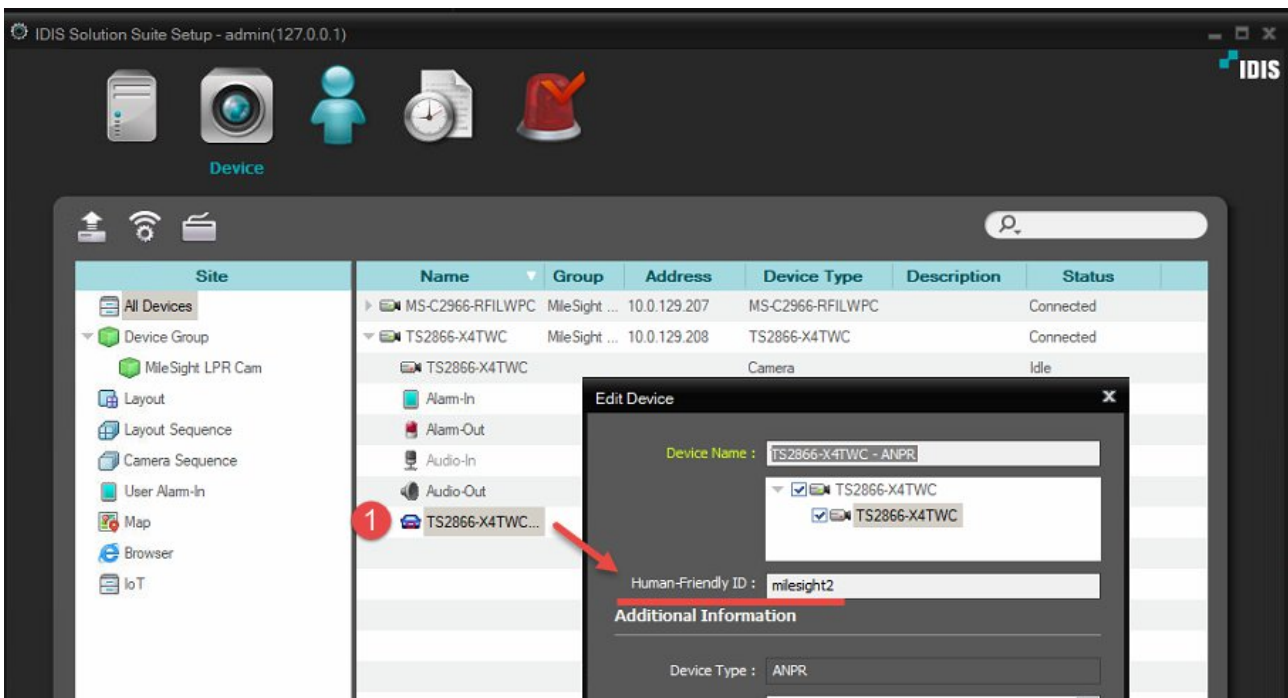
then, the setting is updated as below.

+ service port for ANPR works with 80 port (default config shows 0, it's okay, same as 80 port)



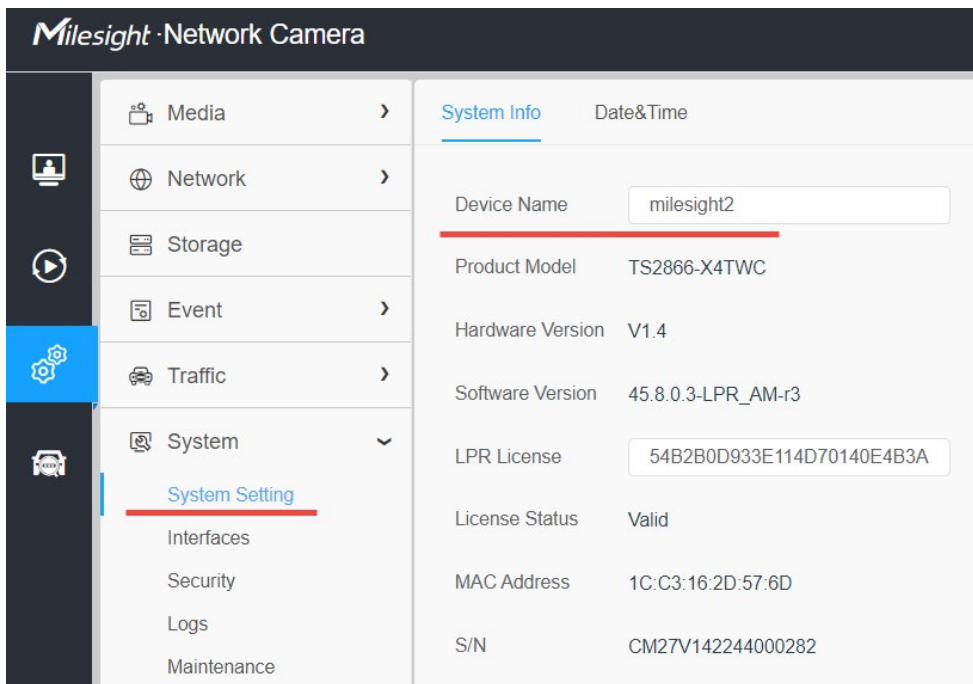
2. Edit Device with No.1 (above screen shot) > add 'Human-Friendly ID'

+ This character must be the same with 'Milesight's Device name



++ refer to below screen shot. (i will mention it in next chapter again.)





< Milesight Web configuration>

### 3.2 Change Service port 80 to 81

This AddON package consist of the IDIS VAI and Milesight camera, **both are using same service port 80 by default.**

**So, service port for Milesight camera should be changed to 81 and camera setting also.**

**To change the service port of it, please follow below step.**

**step 1 :** go to to below folder where Monitoring service is installed

+ C:\IDIS\_Solution\_Suite\server\plugin\setup

**step 2:** create 'Milesight\_setup.conf' file.

**step 3 :** open 'Milesight\_setup.conf' file and add below commands.

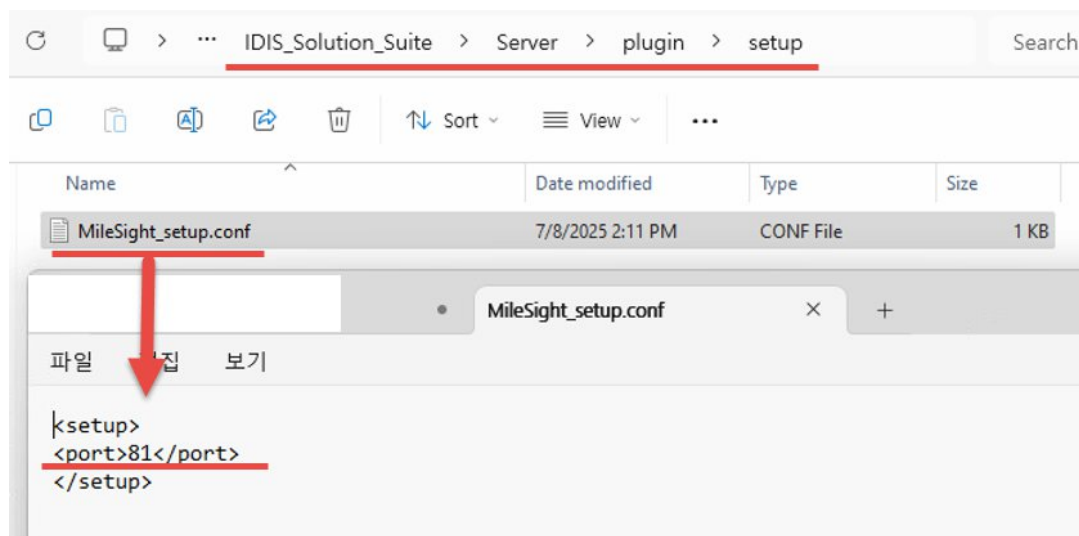
```
<setup>
```

```
<port>81</port>
```

```
</setup>
```

**Step 4 :** Monitoring service should be restarted once.

note : If you do not need to change the port, you do not need to create the 'MileSight\_setup.conf' file.



If you set the service port from 80 to **81**, you can check the ISS listening port on the CMD command.

```

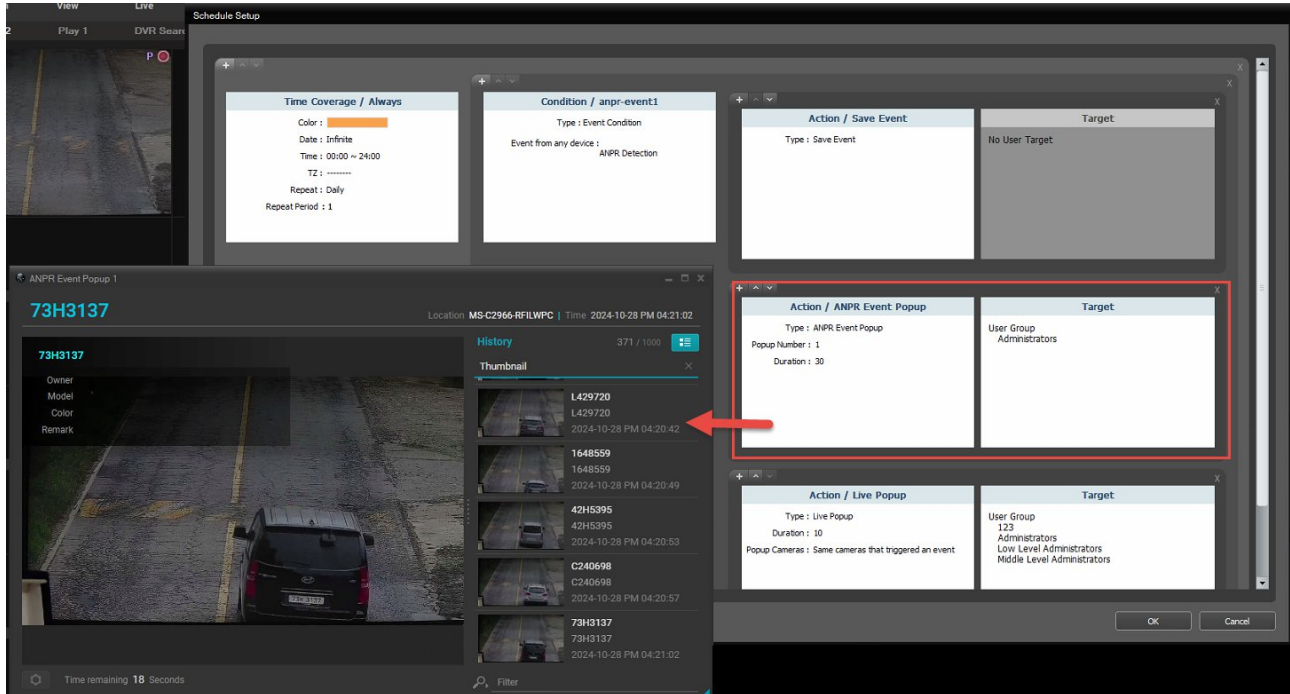
C:\Users\whljung>netstat -na | find "81"
TCP    0.0.0.0:81          0.0.0.0:0          LISTENING
TCP    10.0.124.64:49818  142.250.198.10:443 CLOSE_WAIT
TCP    10.0.124.64:50405  20.198.2.181:443   ESTABLISHED
TCP    10.0.124.64:50481  52.113.194.132:443 ESTABLISHED
TCP    127.0.0.1:50080    127.0.0.1:50081    ESTABLISHED
TCP    127.0.0.1:50081    127.0.0.1:50080    ESTABLISHED
TCP    127.0.0.1:50581    127.0.0.1:50582    ESTABLISHED
TCP    127.0.0.1:50582    127.0.0.1:50581    ESTABLISHED

```

### 3.2.1 ANPR Event Popup :

ANPR Event Popup function is also supported.

You can add ANPR Event Popup action on the event management.



Next, let's learn how to set up the Milesight camera on the ISS.

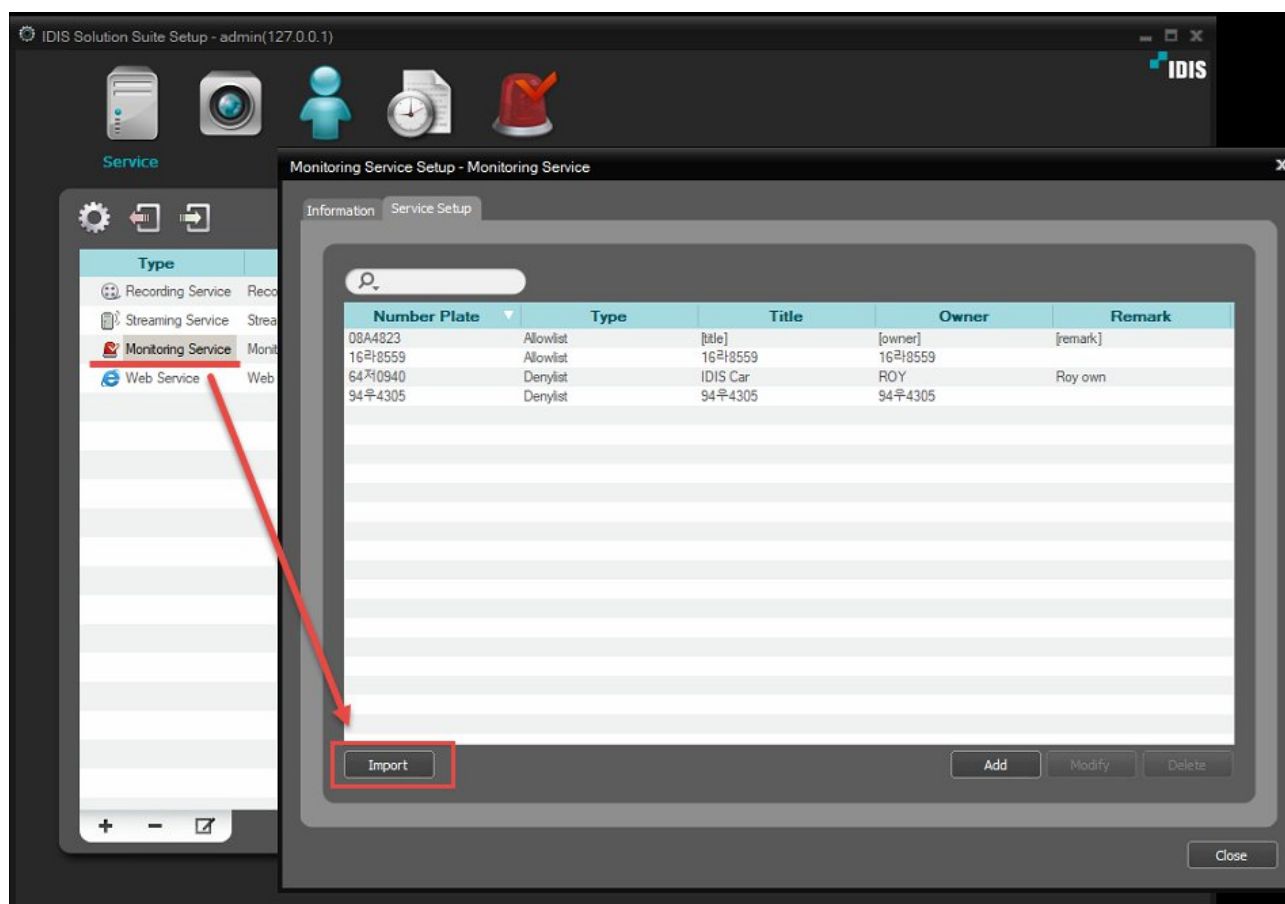
## 4 Optional Setting :

### 4.1 Manually Importing License Plate List to the ISS

If you have an extensive Deny & Allow list to input into the ISS, you can manually import the list through the .CSV file format.

Refer to the sample format:

	A	B	C	D	E	F	G
1	lr	type	title	remark	owner	model	color
2	08A4823	allowlist	[title]	[remark]	[owner]	[car mode]	[car color]
3	AGT0889	denylist	IDIS Car	Roy own	ROY	Malibu	Black
4							
5							



## 5 Demonstration :

Please refer to the YouTube link below for how to operate.

Link : [https://youtu.be/54McUb\\_tZOQ](https://youtu.be/54McUb_tZOQ)

The end.

## 6 Contact Point :

alice.milesight [alice@milesight.com](mailto:alice@milesight.com)

+ she handles this, and will guide us where to contact about technical or Sales

## 7 Trouble shooting

Service port open command :

CMD > netstat -ano | findstr :81

```
C:\Users\admin>
C:\Users\admin>netstat -ano | findstr :81
TCP    0.0.0.0:81          0.0.0.0:0          LISTENING        6692
TCP    10.0.129.141:81     10.0.129.207:40714 ESTABLISHED      6692
```

## Version History

Version	Writer	Revision Date	Remarks
1.01	Roy Lee	230511	Initial Release
1.02	Roy Lee	230526	Technical note updates.
1.04	Roy Lee	231120	Updated setting info
1.05	Roy Lee	231122	<b>Step 4</b> : Monitering service should be restarted once.
1.06	Roy Lee	240108	Modified Typo text
1.07	Roy Lee	240110	Modified Typo text
1.08	Roy Lee	240117	4.3 Manually Importing License Plate List to the ISS
1.09	Roy Lee	241028	Add comment to 2.4 ISS AddOn Package Installation and 3.3.2 ANPR Event Popup :
2.01	Roy Lee	250604	Changed structure to work. All contents are modified.
2.0.2	Roy Lee	250707	Removed MariaDB contents, download link updated
2.03	Roy Lee	250708	Modified service port 80 > 81