

**DICKER**  
DATA

**CONNECT**

SURVEILLANCE AND SECURITY



**BOSCH**

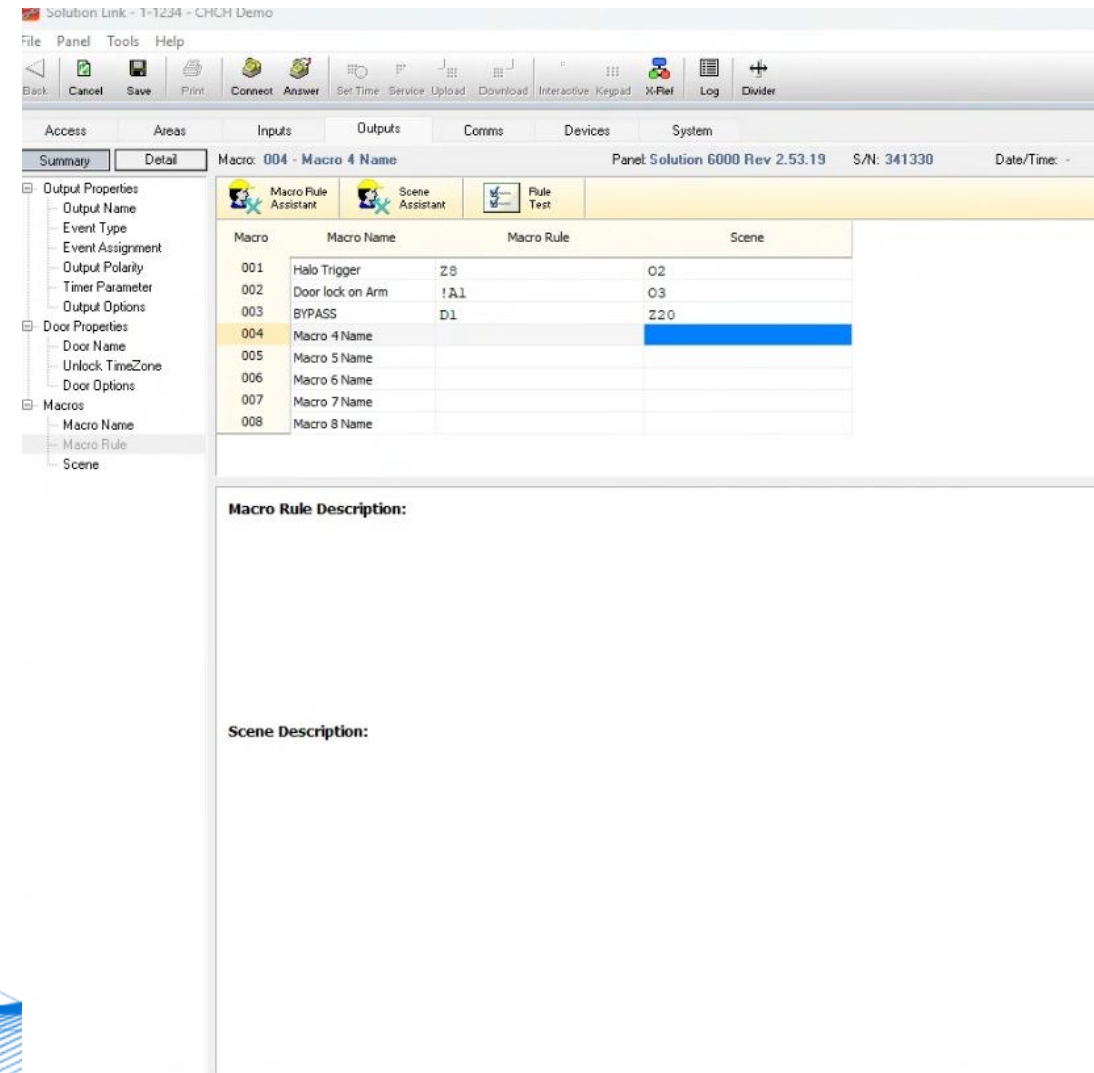
# 6000 Macros Setup

[connect.dickerdata.co.nz](https://connect.dickerdata.co.nz)



# Macros

- **Outputs/Macros**
- **Macro Name** – Create name for Macro
- **Macro Rule** – Create Macro Rule
- **Scene Assistant** – Create result event
- **Test Rule** - Test the Macro to see if the logic works
- After creating the name, select **Macro Rule Assistant**



The screenshot shows the Bosch Solution Link software interface. The main window is titled "Solution Link - 1-1234 - CHCM Demo". The left sidebar contains a tree view with the following items: Output Properties, Door Properties, Macros, and Scene. The "Macros" item is selected, and the "Macro Rule Assistant" window is open. This window has a "Summary" tab and a "Detail" tab. The "Summary" tab shows a table with the following data:

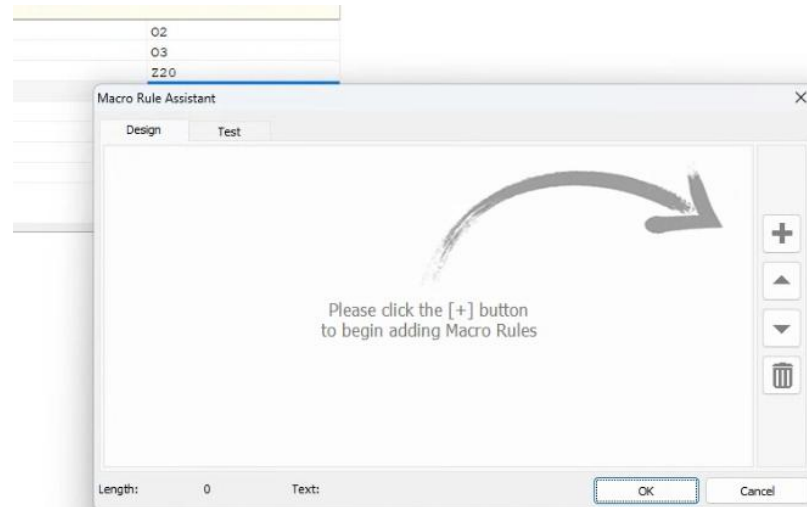
Macro	Macro Name	Macro Rule	Scene
001	Halo Trigger	Z8	O2
002	Door lock on Arm	!A1	O3
003	BYPASS	D1	Z20
004	Macro 4 Name		
005	Macro 5 Name		
006	Macro 6 Name		
007	Macro 7 Name		
008	Macro 8 Name		

Below the table, there are sections for "Macro Rule Description:" and "Scene Description:". The "Macro Rule Description:" section is currently empty.

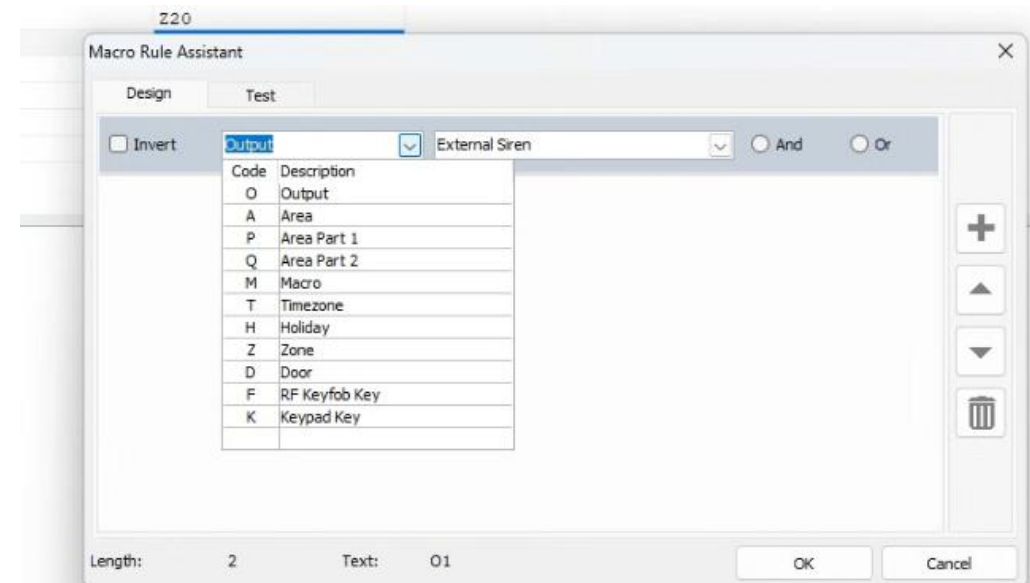


# Macro Rule Assistant

- Select the + Icon

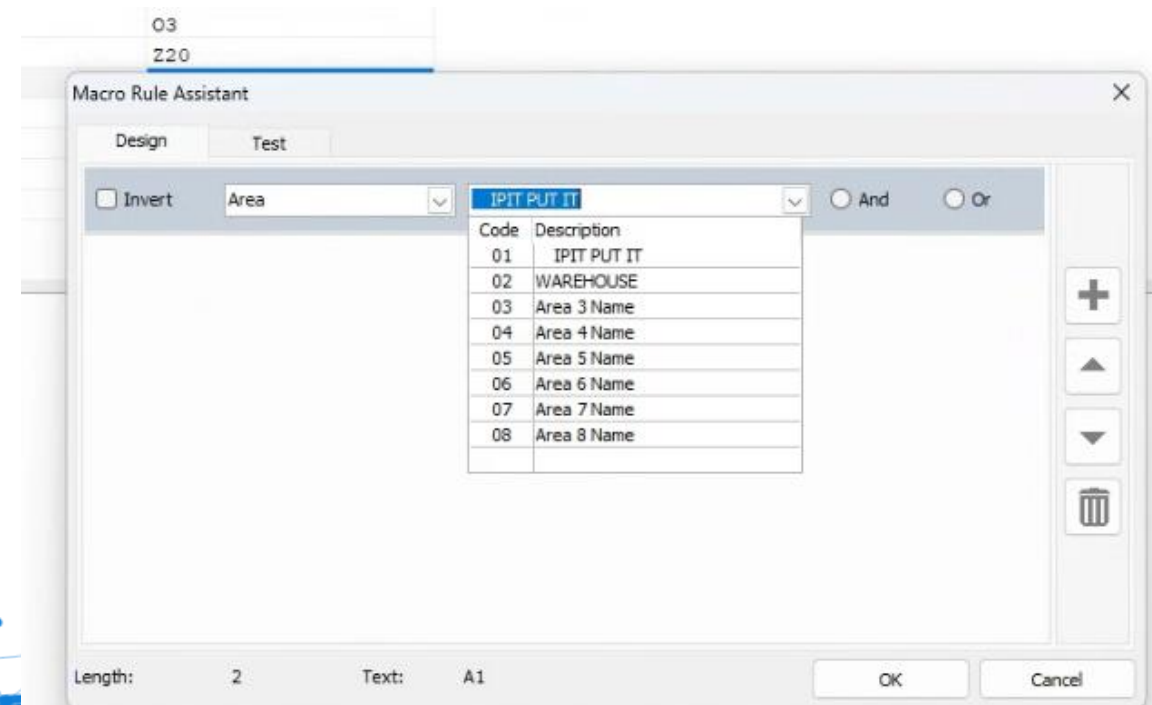


- Click the dropdown arrow and select **Area**



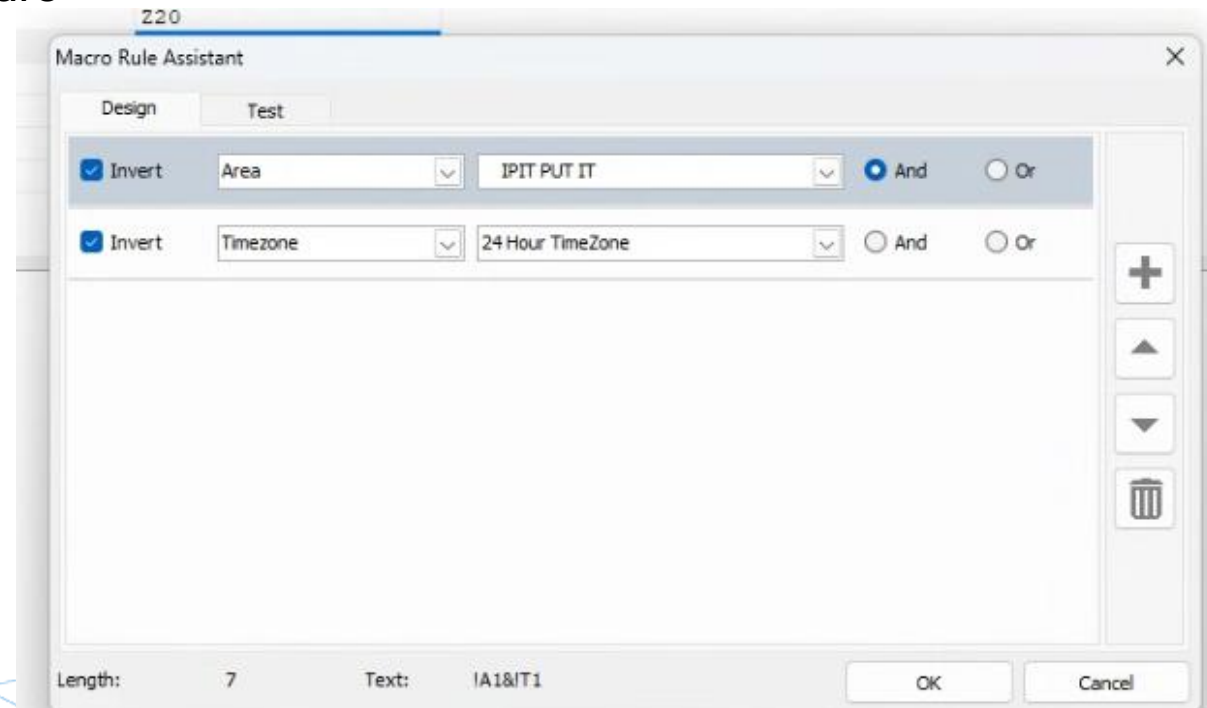
# Macro Rule Assistant

- Select the area to assigned to the Macro.  
Select **Invert** if you want the Macro to be valid when the area is disarmed.
- Select **Add** to link to another Macro line



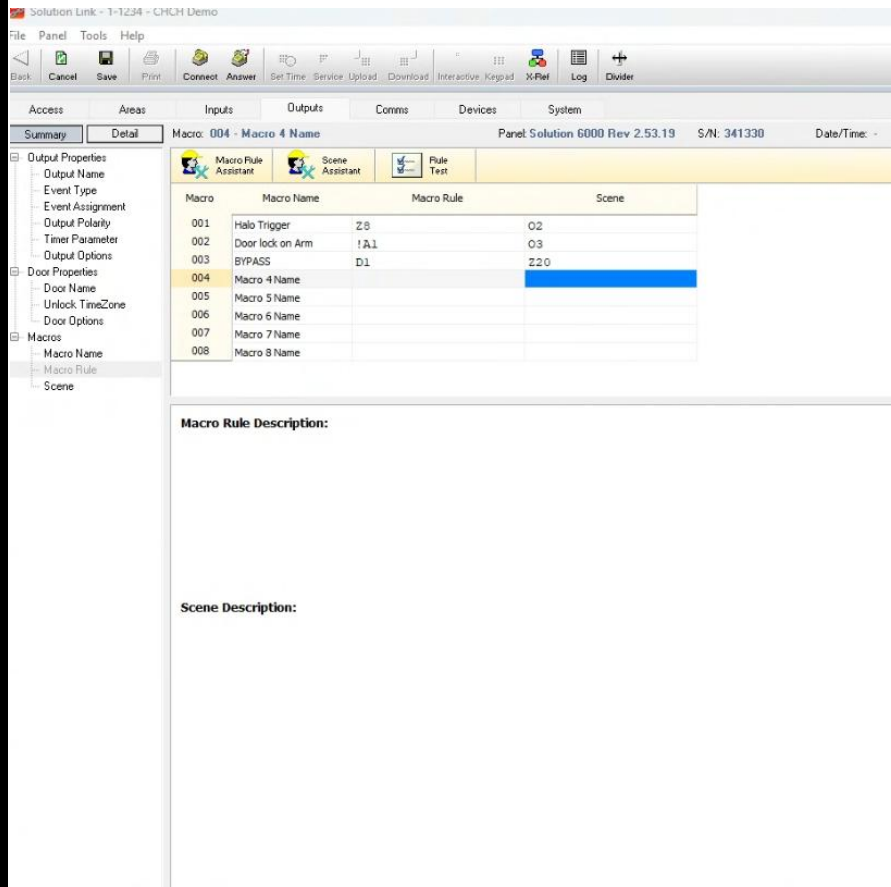
# Macro Rule Assistant

- Click on the + symbol again and select Timezone and the timezone number you want to assign to the Macro. Select **invert** if you want it to be valid outside the Timezone hours
- Click OK when complete



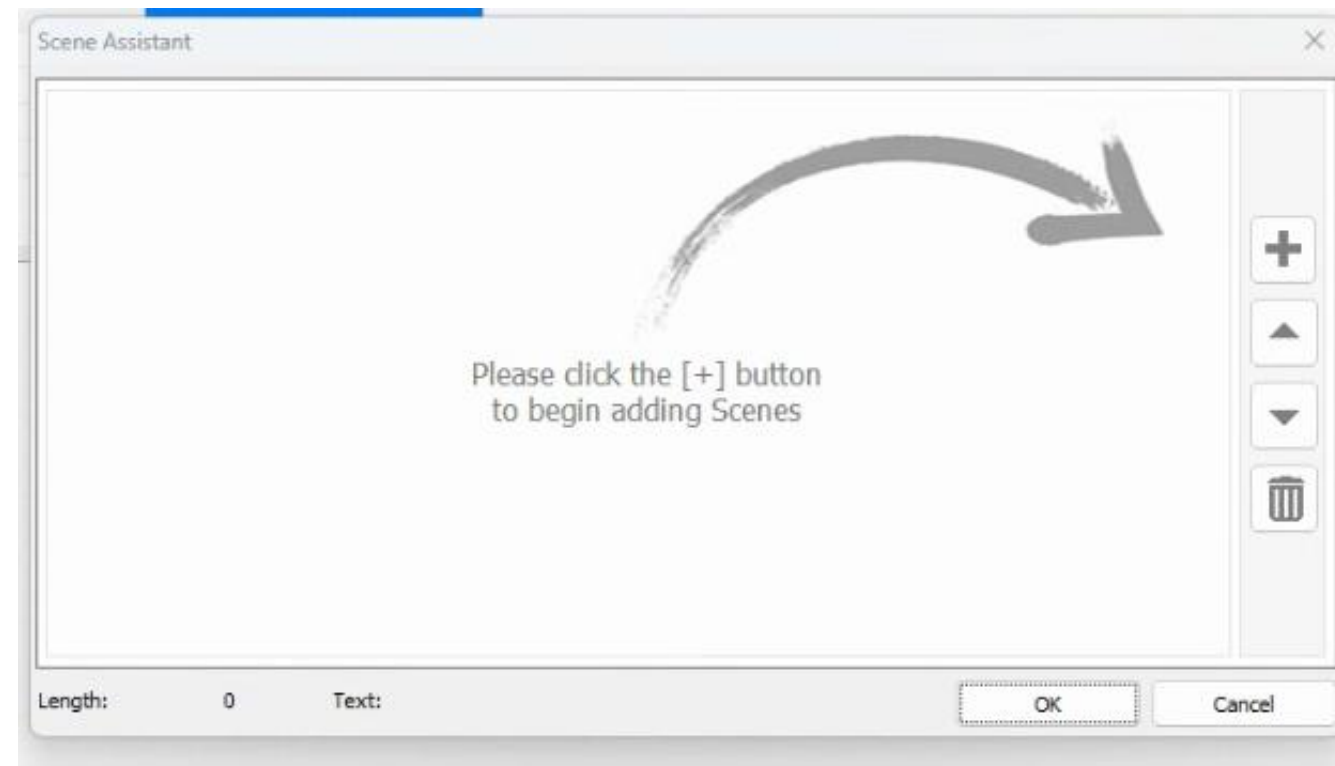
# Scene Assistant

Now Select **Scene Assistant** Tab and select **+**



The screenshot shows the Bosch Solution Link software interface. The 'Scene Assistant' tab is selected, displaying a table of macro rules and a list of macro names. The 'Macro Rule' column is highlighted in blue. Below the table, there are sections for 'Macro Rule Description:' and 'Scene Description:'.

Macro	Macro Name	Macro Rule	Scene
001	Halo Trigger	Z8	O2
002	Door lock on Arm	!A.1	O3
003	BYPASS	D1	Z20
004	Macro 4 Name		
005	Macro 5 Name		
006	Macro 6 Name		
007	Macro 7 Name		
008	Macro 8 Name		

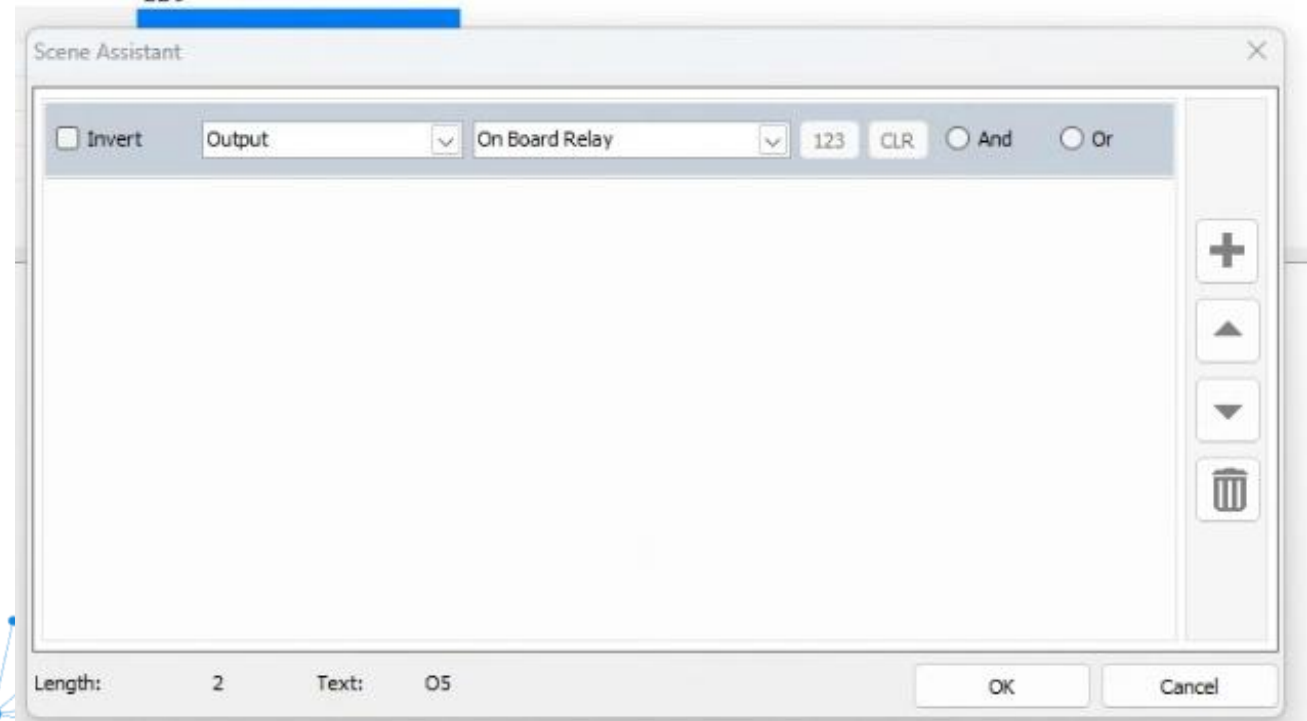


The 'Scene Assistant' dialog box is shown, featuring a large curved arrow pointing to the right. The text inside the dialog reads: 'Please click the [+] button to begin adding Scenes'. On the right side of the dialog, there is a vertical toolbar with a '+' button, a list of buttons (up, down, and trash), and a 'Cancel' button. At the bottom, there are fields for 'Length: 0' and 'Text:', followed by 'OK' and 'Cancel' buttons.



# Scene Assistant

- Select output and output number to use for Macro and click **OK** when complete



# Scene Assistant

- When complete, the details will show at the bottom explaining the operation of the Macro.

Macro	Macro Name	Macro Rule	Scene
001	Halo Trigger	Z8	O2
002	Door lock on Arm	!A1	O3
003	BYPASS	D1	Z20
004	Macro 4 Name	!A1&!T1	O5
005	Macro 5 Name		
006	Macro 6 Name		
007	Macro 7 Name		
008	Macro 8 Name		

**Macro Rule Description:**  
The Macro Rule will be true when Area 1 [IPIT PUT IT] is disarmed and Timezone 1 [24 Hour TimeZone] is not true.

**Scene Description:**  
When the Macro Rule is true the Scene will trigger Output 5 [On Board Relay].



# Test Rule

- When complete, the details will show at the bottom explaining the operation of the Macro.

Macro	Macro Name	Macro Rule	Scene
001	Halo Trigger	Z8	O2
002	Door lock on Arm	!A1	O3
003	BYPASS	D1	Z20
004	Macro 4 Name	!A1&!T1	O5
005	Macro 5 Name		
006	Macro 6 Name		
007	Macro 7 Name		
008	Macro 8 Name		

**Macro Rule Description:**  
The Macro Rule will be true when Area 1 [IPIT PUT IT] is disarmed and Timezone 1 [24 Hour TimeZone] is not true.

**Scene Description:**  
When the Macro Rule is true the Scene will trigger Output 5 [On Board Relay].

- You can test the Macro **Rule Test** by clicking the triggers on the left changing the states of the triggers to make sure programming is correct

Panel Solution 6000 Rev 2.53.19 S/N: 341330 Date/Time: -

Macro Rule Assistant

Design Test

Length: 7 Text: !A1&!T2

OK Cancel

LEGEND

AND OR INV

MACRO TRUE MACRO FALSE

When armed and .

the Scene will relay].